

INDEX TO SHEETS

SHEET	DESCRIPTION
1	— TITLE SHEET
2	— REMOVAL PLAN AND DETAIL SHEET
3	— STA 0+35 (POB) TO STA 4+25 (POE) ROAD PLAN & PROFILE
4	— PERMANENT PAVEMENT MARKING DETAIL & TRAFFIC CONTROL DETAIL DETAIL

STANDARD PLANS

R-I-G DRAINAGE STRUCTURES
R-7-F COVER B
R-I5-G COVER K
R-28-K CURB RAMP AND DETECTABLE WARNING DETAILS
R-29-J DRIVEWAY OPENINGS & APPROACHES AND CONCRETE SIDEWALKS
R-30-G CONCRETE CURB & GUTTER
R-83-C UTILITY TRENCHES
R-96-E SOIL EROSION & SEDIMENTATION CONTROL MEASURES



PROJECT LOCATION



CITY OF MUSKEGON
FIRST STREET

FROM HAMILTON AVENUE TO APPLE AVENUE (M-46)

JOB NUMBER: H-92412, S-92412 & W-92412

UTILITIES

ELECTRIC
JOEL BROWN
CONSUMERS ENERGY
700 E STERNBERG ROAD
NORTON SHORES, MI 49441
(231) 557-8762

TELEPHONE
CINDY WHITEMAN
FRONTIER COMMUNICATIONS
860 TERRACE STREET
MUSKEGON MI 49440
(231) 727-1134 (OFFICE)
(231) 726-0290 (CELL)

GAS
TONY FERRIER
DTE ENERGY
2359 OLTHOFF DRIVE
MUSKEGON MI 49444
(231) 726-0943

CABLE
JIM STITZEL
COMCAST
700 W BROADWAY AVENUE
MUSKEGON, MI 49441
(810) 217-1642

WATER & SEWER
DAVE BAKER
CITY OF MUSKEGON DPW
1350 E KEATING AVENUE
MUSKEGON MI 49442
(231) 724-4100

NOTE:
THE IMPROVEMENTS COVERED BY THESE PLANS SHALL BE DONE IN ACCORDANCE WITH THE MICHIGAN DEPARTMENT OF TRANSPORTATION 2020 STANDARD SPECIFICATIONS FOR CONSTRUCTION AND THE 2011 MICHIGAN MANUAL OF UNIFORM TRAFFIC CONTROL DEVICES. THESE IMPROVEMENTS HAVE BEEN DESIGNED IN ACCORDANCE WITH THE MICHIGAN DEPARTMENT OF TRANSPORTATION LOCAL AGENCY PROGRAMS 3R GUIDELINES FOR GEOMETRICS, 2017 EDITION.

0.07 MI OF PAVEMENT RECONSTRUCTION INCLUDES PAVEMENT REMOVAL, SANITARY SEWER, STORM SEWER, CONCRETE CURB AND GUTTER, GRADING, HMA PAVING AND PAVEMENT MARKINGS ON FIRST ST. FROM HAMILTON AVE. TO APPLE AVE. (M-46) IN THE CITY OF MUSKEGON, MUSKEGON COUNTY.

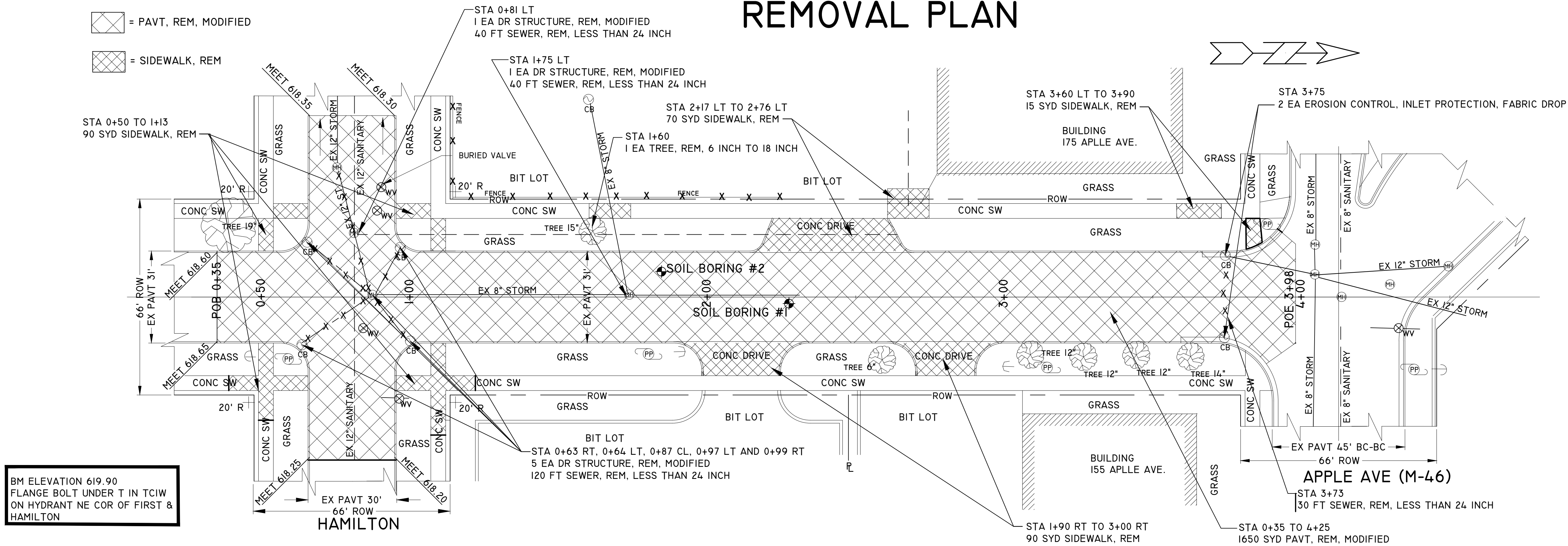
PREPARED UNDER THE SUPERVISION OF:

DAN VANDERHEIDE, P.E.
CITY ENGINEER

CITY OF MUSKEGON
PUBLIC WORKS DEPARTMENT
1350 E. KEATING AVE.
MUSKEGON MI 49442

CITY OF MUSKEGON			FIRST STREET		
OFFICE OF THE CITY ENGINEER			HAMILTON TO APPLE AVENUE (M-46)		
DRAWN C WIGGINS JULY 24	REVISION		SURVEY F PEASE MAY 24		H-92412
CHECKED	REVISION		AS-BUILT		PROJECT NO
APPROVED			SCALE 1" = 20'		SHEET NO 1 OF 4

REMOVAL PLAN



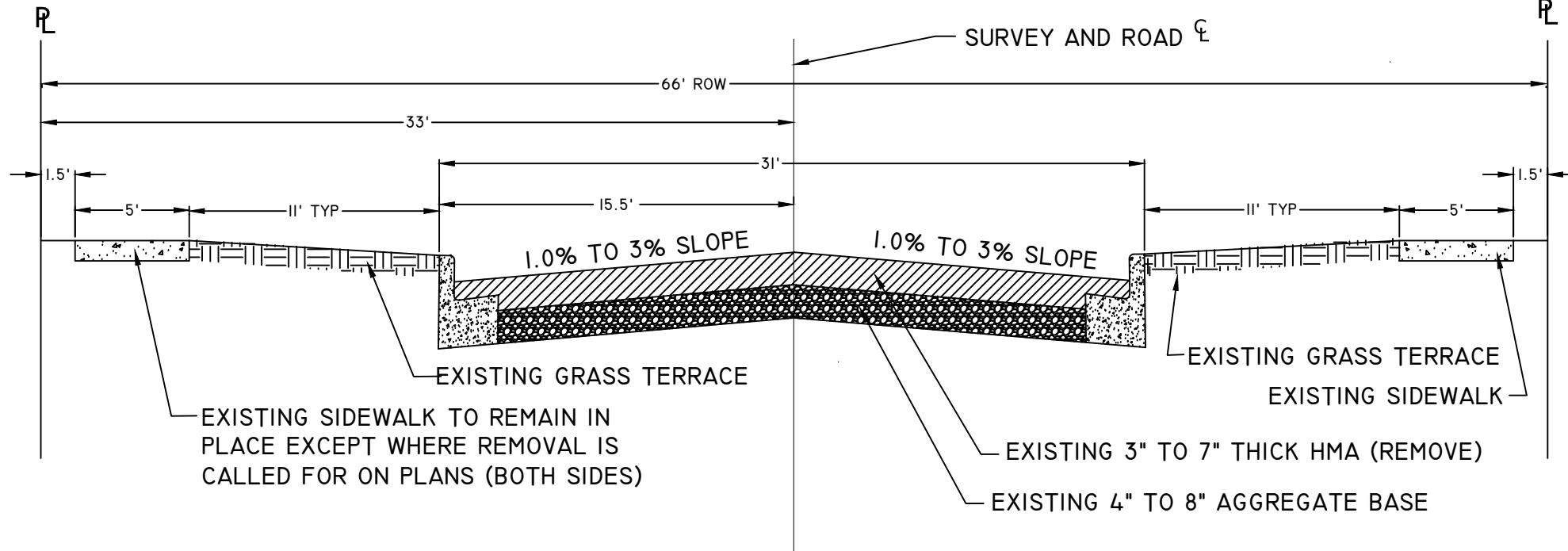
TOTAL REMOVAL QUANTITIES FROM 0+35 TO 4+25		
TREE, REM, 6 INCH TO 18 INCH	1	EA
SEWER, REM, LESS THAN 24 INCH	190	FT
DR STRUCTURE, REM, MODIFIED	7	EA
SIDEWALK, REM	270	SYD
PAVT, REM, MODIFIED	1600	SYD
EROSION CONTROL, INLET PROTECTION, FABRIC DROP	2	EA

GENERAL NOTES:

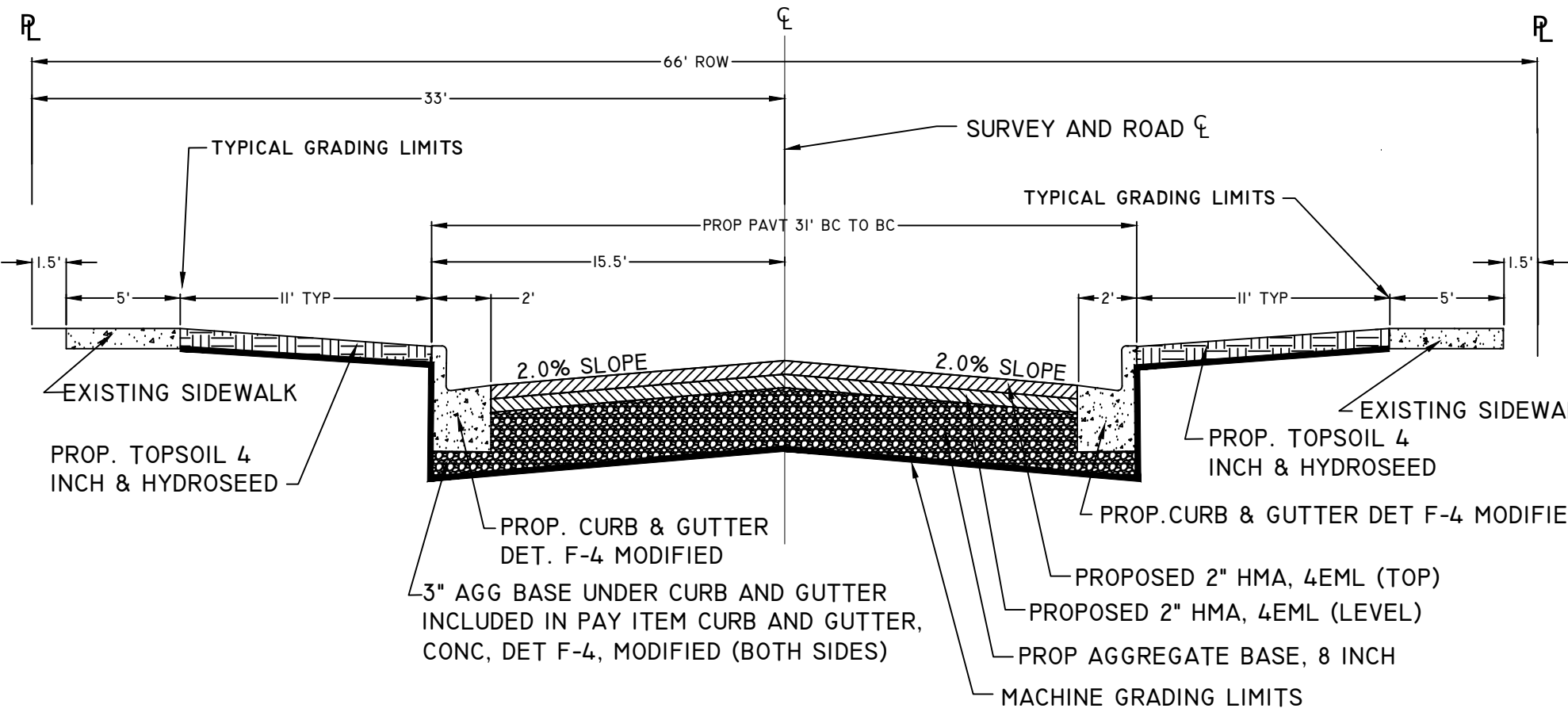
- UPON REQUEST AND APPROVAL, THE CONTRACTOR MAY OBTAIN A WATER SUPPLY FROM THE CITY OF MUSKEGON FIRE HYDRANTS AT NO COST, PROVIDED THAT THEY FOLLOW THE CONDITIONS OF THE CITY WATER DEPARTMENT.
- WHENEVER SMALL CASTINGS (STOP BOXES & METER PITS) THAT ARE ENCOUNTERED WITHIN THE WORK AREA THEY SHALL BE ADJUSTED AT NO COST TO THE DEPARTMENT. THE DEPARTMENT WILL CONSIDER THE COST OF THIS WORK TO BE INCLUDED IN THE CONTRACT UNIT PRICES FOR OTHER RELEVANT PAY ITEMS.
- FOR PROTECTION OF UNDERGROUND UTILITIES, THE CONTRACTOR SHALL CALL MISS DIG, 1-800-482-7171, A MINIMUM OF 3 WORKING DAYS EXCLUDING SATURDAYS, SUNDAYS, AND HOLIDAYS PRIOR TO EXCAVATING IN THE VICINITY OF ALL UTILITY LINES. ALL MISS DIG PARTICIPATING MEMBERS WILL, THIS BE NOTIFIED, THIS DOES NOT RELIEVE THE CONTRACTOR THE RESPONSIBILITY OF NOTIFYING OWNERS WHO MAY NOT BE PART OF THE MISS DIG ALERT SYSTEM.
- PUBLIC UTILITIES OF ALL TYPES HAVE BEEN SHOWN ON THE PLAN USING AVAILABLE INFORMATION, BUT ARE NOT GUARANTEED AS ACCURATE. OR THAT UTILITIES OTHER THAN THOSE SHOWN ARE NOT PRESENT. THE CONTRACTOR SHALL CALL MISS DIG 3 WORKING DAYS (EXCLUDING SAT., SUN., AND HOLIDAYS) BEFORE DIGGING (1-800-482-7171).
- EXISTING TRAFFIC CONTROL SIGNS THAT NEED TO BE REMOVED TO ALLOW THE CONTRACTOR TO WORK WILL BE REMOVED BY THE CONTRACTOR AND STORED IN A SAFE PLACE TO AVOID DAMAGE. THE CONTRACTOR SHALL THEN REINSTALL THE SIGNS IN THEIR ORIGINAL LOCATION OR AS DIRECTED BY THE ENGINEER. REMOVAL AND REPLACEMENT OF THE SIGNS WILL BE INCLUDED IN THE PAY ITEM OF MINOR TRAF DEVICES. SIGNS THAT ARE DAMAGED BY THE CONTRACTOR WILL BE REPLACED BY CITY FORCES, AND THE CONTRACTOR WILL PAY THE CITY FOR THE COST OF REPLACEMENT.
- THE CONTRACTOR SHALL SAW CUT ALL MEETS RELATIVE TO SIDEWALK OR PAVEMENT CONSTRUCTION UNLESS WAIVED BY THE ENGINEER. PAYMENT FOR SAW CUTTING SHALL BE INCLUDED IN THE PAYMENT FOR THE PAY ITEMS PAVT, REM, MODIFIED, CURB AND GUTTER, REM, HMA SURFACE, REM AND SIDEWALK, REM. NO ADDITIONAL PAYMENT WILL ALLOWED FOR SAW CUTTING.
- IRRIGATION SYSTEMS AS MARKED OR STAKED, AND ARE DAMAGED THROUGH CARELESS WORK BY THE CONTRACTOR WILL BE REPAIRED BY THE CONTRACTOR AT NO COST TO THE CITY OF MUSKEGON. THE CITY OF MUSKEGON WILL PAY FOR RELOCATION OF IRRIGATION SYSTEMS DUE TO WIDENING OF ROAD OR IN CONFLICT WITH THE CONSTRUCTION OF UNDERGROUND WORK. A COST NEGOTIATED BETWEEN THE ENGINEER AND THE CONTRACTOR FOR IRRIGATION REPAIRS WILL BE ESTABLISHED AND PAID FOR WITH THE CONTRACT PAY ITEM "IRRIGATION REPAIR". IT SHALL BE AT THE ENGINEER'S DISCRETION AS TO WHAT IRRIGATION REPAIR AND/OR RELOCATION IS THE RESULT OF CARELESS WORK BY THE CONTRACTOR OR THAT WHICH NECESSARY TO THE CONSTRUCTION OF ROAD OR UTILITY WORK.
- THE CONTRACTOR SHALL PREVENT EROSION AND CONTROL SEDIMENTATION ASSOCIATED WITH THE PROJECT. KEEP SEDIMENTATION WITHIN THE RIGHT OF WAY AND OUT OF SURFACE WATERS. CONSTRUCT AND MAINTAIN TEMPORARY EROSION AND SEDIMENTATION CONTROLS. CONTROLS TO INCLUDE EROSION CONTROL, INLET PROTECTION, FABRIC DROPS, ON ALL INLET STRUCTURES, NEW AND EXISTING, AND INSTALL TEMPORARY EROSION, SEDIMENTATION CONTROLS AS DIRECTED BY THE ENGINEER. THE CONTRACTOR SHALL REMOVE ON A DAILY BASIS SOIL TRACKED ONTO EXISTING PAVED ROADS. (VACUUM METHODS ARE PREFERRED BUT BROOM SWEEPING IS ACCEPTABLE IF THE MATERIAL IS REMOVED) THE CONTRACTOR SHALL INSPECT ALL SOIL EROSION / SEDIMENTATION CONTROL MEASURES ON A WEEKLY BASIS OR AFTER EACH RAIN FALL, EVENT, CLEAN REPAIR, OR REPLACE, AS NECESSARY, TO ENSURE PROPER FUNCTION. ALL SOIL EROSION / SEDIMENTATION CONTROLS SHALL REMAIN UNTIL ALL DISTURBED AREAS ARE STABILIZED. ALL SOIL EROSION / SEDIMENTATION CONTROL, EXCEPT FOR THE EROSION CONTROL, INLET PROTECTION, FABRIC DROP, SHALL BE INCLUDED WITH THE PAY ITEM PROJECT CLEAN UP NO OTHER PAYMENT SHALL BE MADE.

CROSS SECTION DETAIL

TYPICAL EXISTING CROSS SECTION STATION 0+35 POB TO 4+25



TYPICAL PROPOSED CROSS SECTION STATION 0+35 POB TO 4+25 POE



MACHINE GRADING, MODIFIED NOTE:

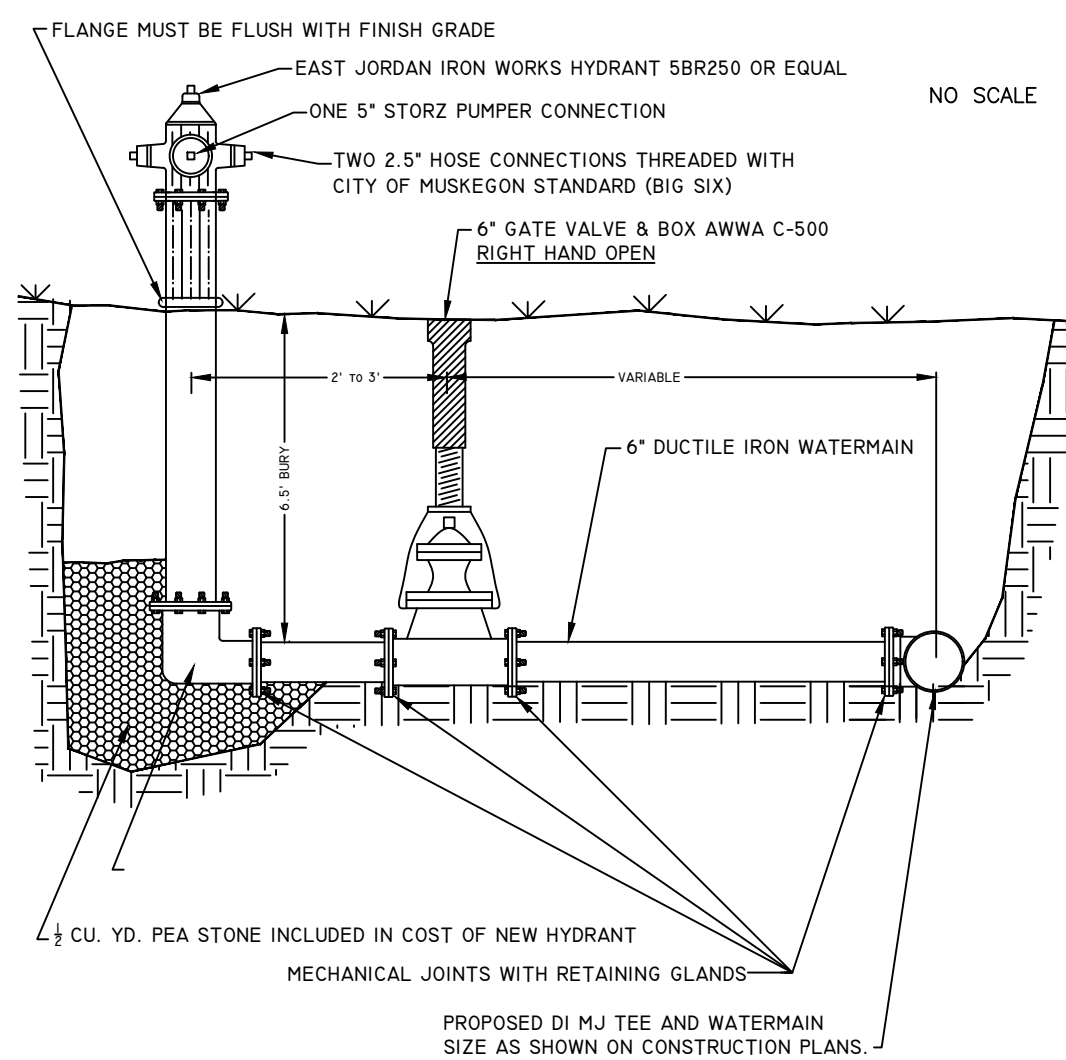
THERE WILL BE APPROXIMATELY 300 CYD LOOSE MEASURE OF EXCAVATION GENERATED DURING THIS PROJECT, OF WHICH APPROXIMATELY 0 CYD WILL BE USED FOR EMBANKMENT. THE REMAINING 300 CYD OF EXCAVATION WILL BE REMOVED FROM THE JOB SITE AND BECOME PROPERTY OF THE CONTRACTOR. THE REMOVAL OF THIS EXCAVATION WILL BE INCLUDED IN PAYMENT FOR THE MACHINE GRADING, MODIFIED PAY ITEM.

PAVT, REM, MODIFIED NOTE:

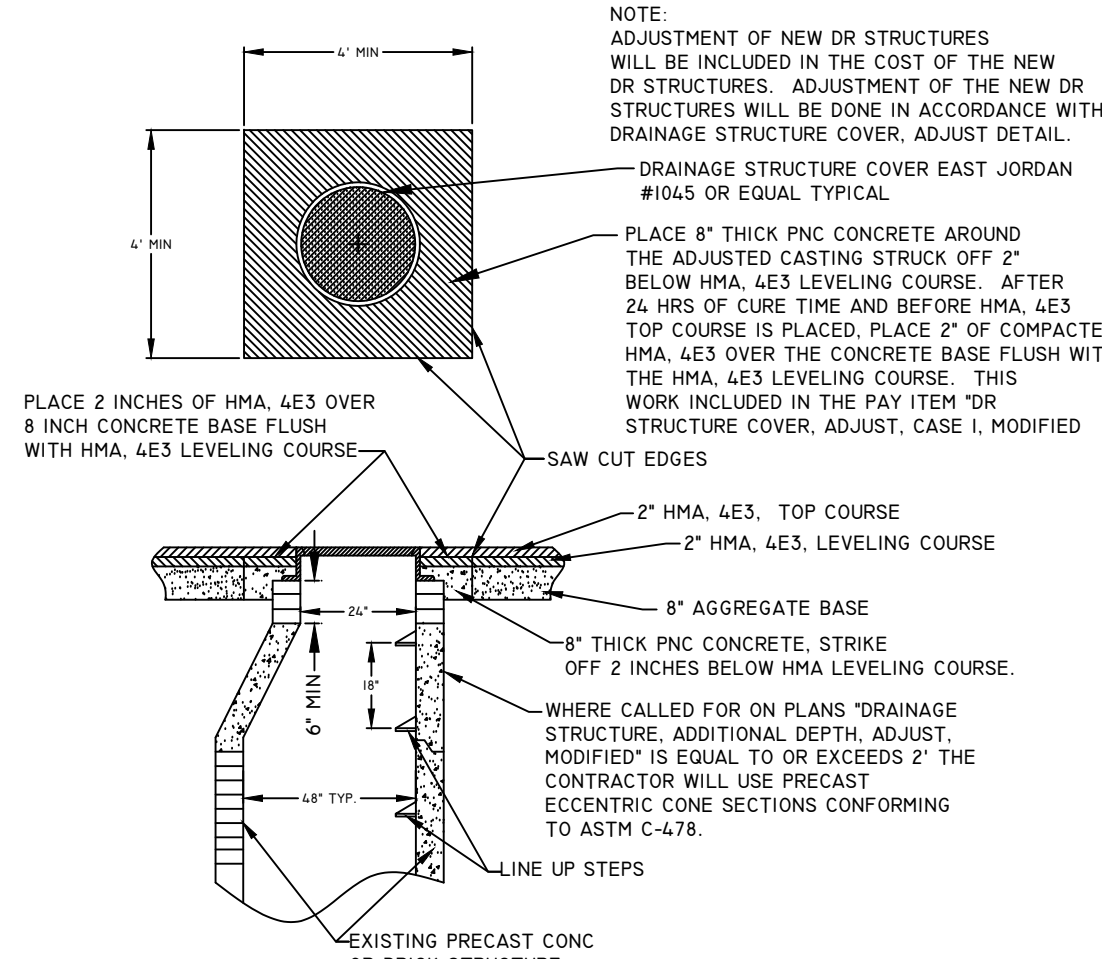
EXISTING PAVEMENT CONSIST OF APPROXIMATELY 3" TO 7" HMA. THE HAMILTON INTERSECTION APPEARS TO HAVE A 6" CONC BASE WITH A 3" TO 4" OVERLY OF HMA. ONLY ONE PAVEMENT REMOVAL ITEM WILL BE CONSIDERED, REGARDLESS OF PAVEMENT THICKNESS OR MATERIALS. PAYMENT FOR CURB OR CURB AND GUTTER REMOVAL WILL BE PAID AS PAVT, REM, MODIFIED. THERE WILL BE NO SEPARATE PAY ITEM FOR CURB OR CURB AND GUTTER REMOVAL.

DETAIL SHEET

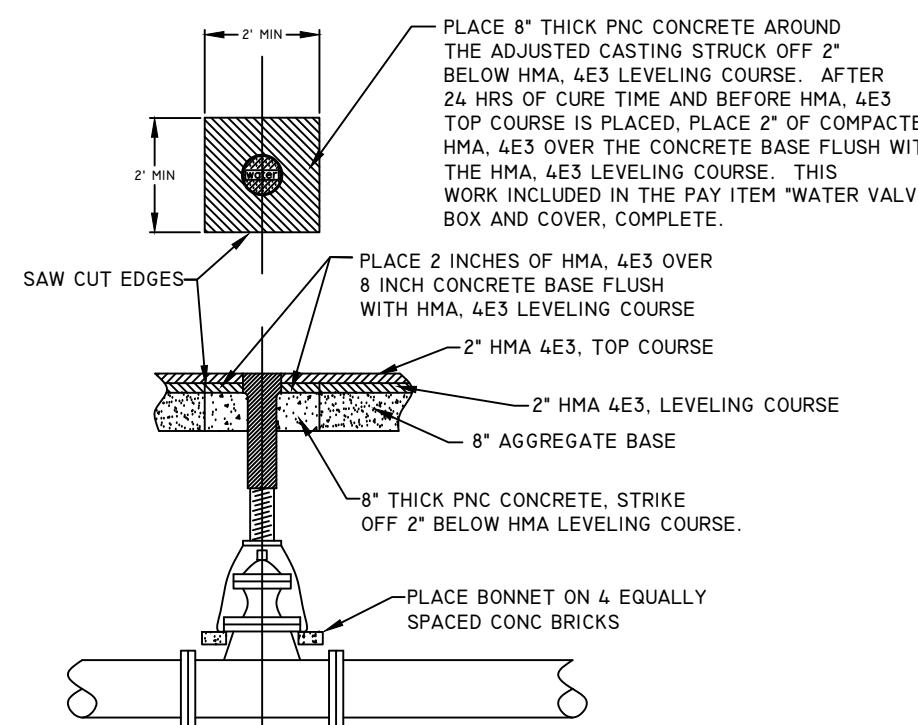
HYDRANT DETAIL



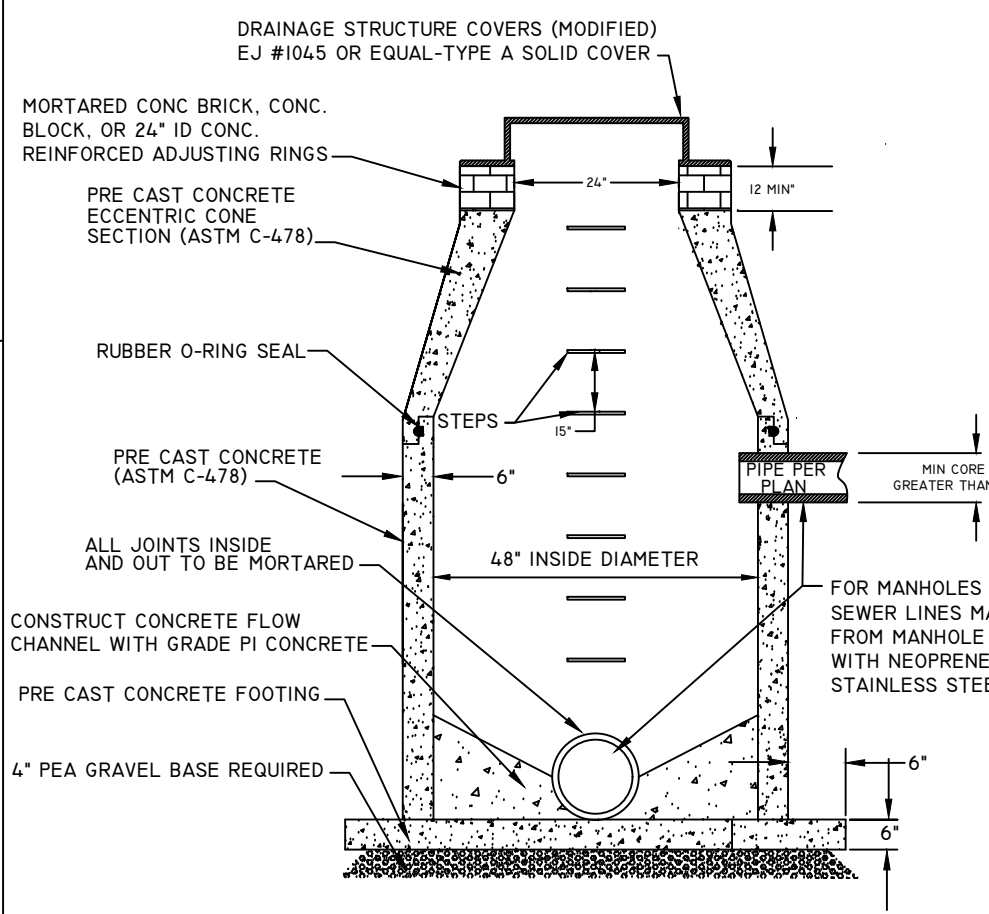
DRAINAGE STRUCTURE COVER, ADJUST DETAIL



WATER VALVE BOX AND COVER, COMPLETE DETAIL



SANITARY MANHOLE SPECIAL DETAIL

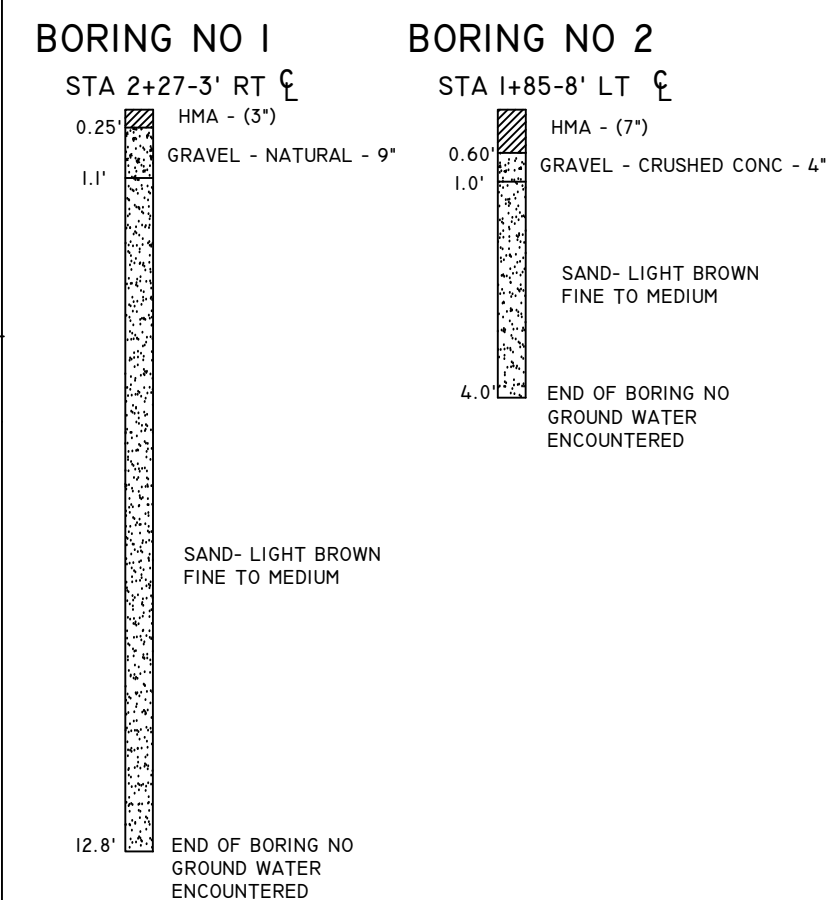


FIRST ST. HMA APPLICATION TABLE

FIRST ST. HMA APPLICATION TABLE			
	RATE	PERFORMANCE GRADE	REMARKS
HMA, 4EML (TOP)	220#/SYD	6A-28	2 INCHES - 1 LIFT AWI 260 MIN
HMA, 4EML (LEVEL)	220#/SYD	6A-28	2 INCHES - 1 LIFT
HAND PATCHING	220#/SYD	6A-28	2 INCHES - 1 LIFT

HMA BOND COAT, SS-IH, AT 0.05 TO 0.10 GAL/SYD, SHALL BE PLACED BETWEEN EACH LIFT. THE COST IS INCLUDED WITH THE HMA PAY ITEMS.

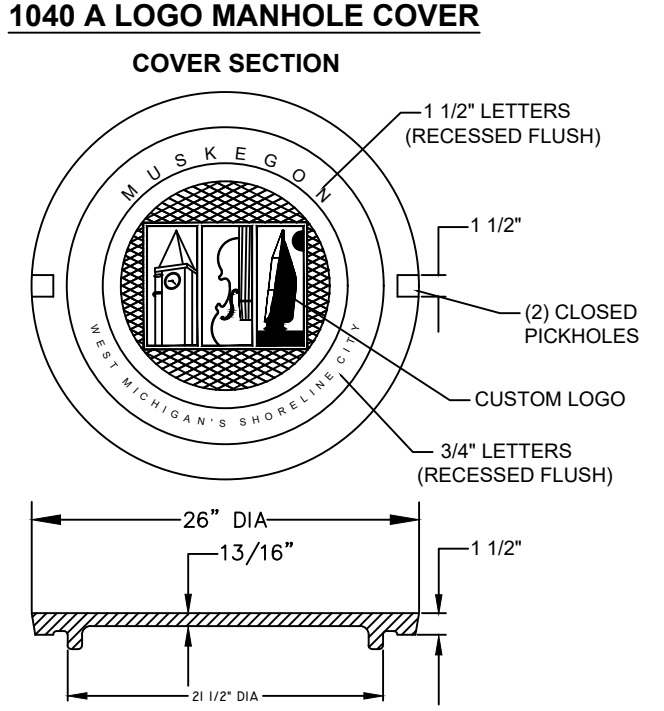
PAVEMENT CORE AND SOIL BORING LOG



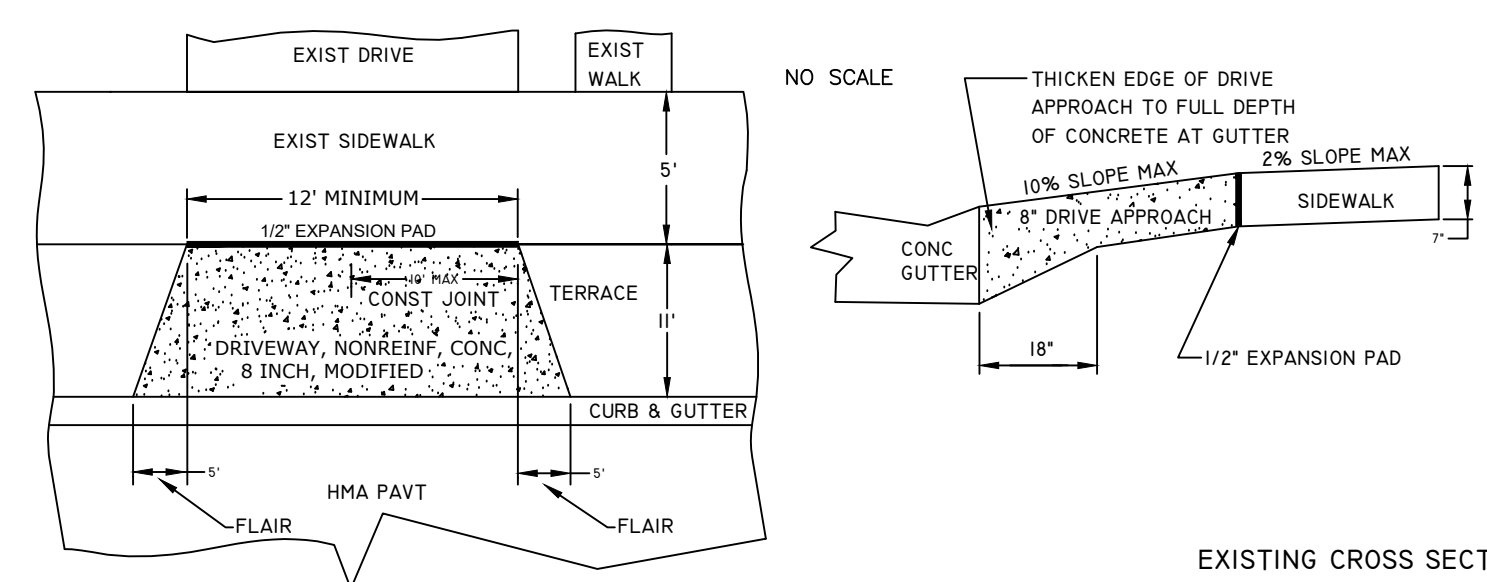
DRAINAGE STRUCTURE COVERS

TYPE	CASTING DESCRIPTION	QTY
COVER B, MODIFIED	MANHOLE CASTING EAST JORDAN #1045 OR EQUAL TYPE A - SOLID COVER AS DETAILED BELOW	6
COVER K, MODIFIED	CATCH BASIN CASTING EAST JORDAN #7045 OR EQUAL	1

DETAIL FOR COVER B 1040 A LOGO MANHOLE COVER



TYPICAL DRIVE APPROACH DETAIL



EXISTING CROSS SECTIONS & DETAIL SHEET

CITY OF MUSKEGON

OFFICE OF THE CITY ENGINEER

DRAWN C WIGGINS JULY 24

CHECKED

APPROVED

REVISION

REVISION

AS-BUILT

SCALE 1" = 20'

FIRST STREET

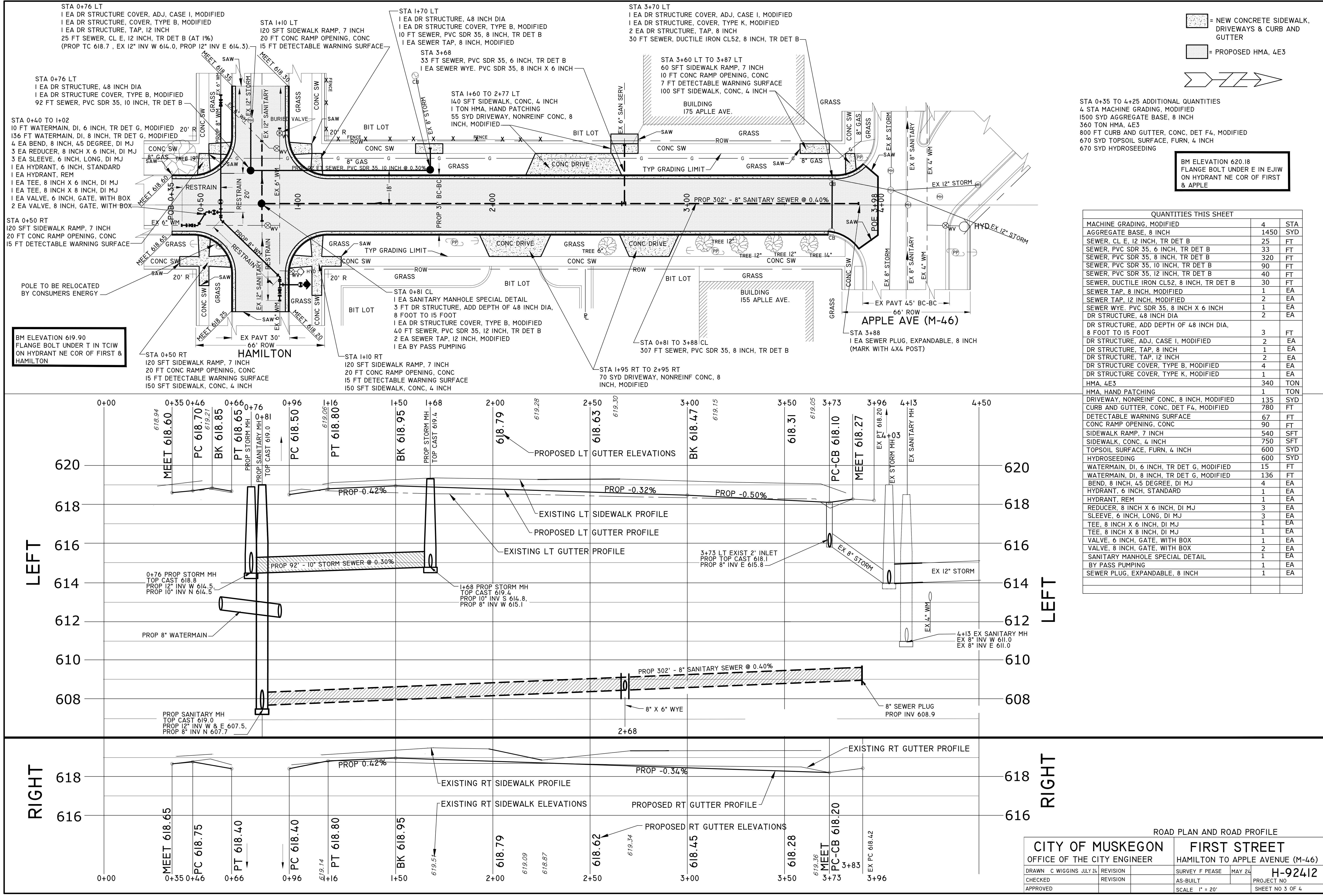
HAMILTON TO APPLE AVENUE (M-46)

SURVEY F PEASE MAY 24

PROJECT NO

SHEET NO 2 OF 4

H-92412



[Pattern] = NEW CONCRETE SIDEWALK, DRIVEWAYS & CURB AND GUTTER

[Pattern] = PROPOSED HMA, 4E3

[Symbol] →

STA 0+35 TO 4+25 ADDITIONAL QUANTITIES
4 STA MACHINE GRADING, MODIFIED
1500 SYD AGGREGATE BASE, 8 INCH
360 TON HMA, 4E3
800 FT CURB AND GUTTER, CONC, DET F4, MODIFIED
670 SYD TOPSOIL SURFACE, FURN, 4 INCH
670 SYD HYDROSEEDING

BM ELEVATION 620.18
FLANGE BOLT UNDER E IN EJW
ON HYDRANT NE COR OF FIRST & APPLE

QUANTITIES THIS SHEET		
MACHINE GRADING, MODIFIED	4	STA
AGGREGATE BASE, 8 INCH	1450	SYD
SEWER, CL E, 12 INCH, TR DET B	25	FT
SEWER, PVC SDR 35, 6 INCH, TR DET B	33	FT
SEWER, PVC SDR 35, 8 INCH, TR DET B	320	FT
SEWER, PVC SDR 35, 10 INCH, TR DET B	90	FT
SEWER, PVC SDR 35, 12 INCH, TR DET B	40	FT
SEWER, DUCTILE IRON CL52, 8 INCH, TR DET B	30	FT
SEWER TAP, 8 INCH, MODIFIED	1	EA
SEWER TAP, 12 INCH, MODIFIED	2	EA
SEWER WYE, PVC SDR 35, 8 INCH X 6 INCH	1	EA
DR STRUCTURE, 48 INCH DIA	2	EA
DR STRUCTURE, ADD DEPTH OF 48 INCH DIA, 8 FOOT TO 15 FOOT	3	FT
DR STRUCTURE, ADJ, CASE I, MODIFIED	2	EA
DR STRUCTURE, TAP, 8 INCH	1	EA
DR STRUCTURE, TAP, 12 INCH	2	EA
DR STRUCTURE COVER, TYPE B, MODIFIED	4	EA
DR STRUCTURE COVER, TYPE K, MODIFIED	1	EA
HMA, 4E3	340	TON
HMA, HAND PATCHING	1	TON
DRIVEWAY, NONREINF CONC, 8 INCH, MODIFIED	135	SYD
CURB AND GUTTER, CONC, DET F4, MODIFIED	780	FT
DETECTABLE WARNING SURFACE	67	FT
CONC RAMP OPENING, CONC	90	FT
SIDEWALK RAMP, 7 INCH	540	SFT
SIDEWALK, CONC, 4 INCH	750	SFT
TOPSOIL SURFACE, FURN, 4 INCH	600	SYD
HYDROSEEDING	600	SYD
WATERMAIN, DI, 6 INCH, TR DET G, MODIFIED	15	FT
WATERMAIN, DI, 8 INCH, TR DET G, MODIFIED	136	FT
BEND, 8 INCH, 45 DEGREE, DI MJ	4	EA
HYDRANT, 6 INCH, STANDARD	1	EA
HYDRANT, REM	1	EA
REDUCER, 8 INCH X 6 INCH, DI MJ	3	EA
SLEEVE, 6 INCH, LONG, DI MJ	3	EA
TEE, 8 INCH X 6 INCH, DI MJ	1	EA
TEE, 8 INCH X 8 INCH, DI MJ	1	EA
VALVE, 6 INCH, GATE, WITH BOX	1	EA
VALVE, 8 INCH, GATE, WITH BOX	2	EA
SANITARY MANHOLE SPECIAL DETAIL	1	EA
BY PASS PUMPING	1	EA
SEWER PLUG, EXPANDABLE, 8 INCH	1	EA

ROAD PLAN AND ROAD PROFILE			
CITY OF MUSKEGON		FIRST STREET	
OFFICE OF THE CITY ENGINEER		HAMILTON TO APPLE AVENUE (M-46)	
DRAWN C WIGGINS JULY 24	REVISION	SURVEY F PEASE MAY 24	H-92412
CHECKED	REVISION		PROJECT NO
APPROVED		SCALE 1" = 20'	SHEET NO 3 OF 4

PROJECT LOCATION

Map showing the project location at the intersection of Apple Ave. (M46) and M4-10. The map includes various streets and landmarks, with specific locations marked for barricades, signs, and drums.

Key Locations and Features:

- Streets:** MORRIS AVE., SECOND ST., THIRD ST., WESTERN AVE., CLAY AVE., WEBSTER ST., FIRST ST., JEFFERSON AVE., MCKEON AVE., TERRACE ST., WILSON AVE., SPRING ST., CEDAR ST., AMITY AVE., ALLEN AVE., APPLE AVE. (M46), CONCORD AVE., HARTFORD AVE., DIANA AVE., DELAWARE AVE., IOWA AVE., TERRACE ST., CATHARINE AVE., RANSOM AVE., ISABELLA AVE., ARTUR ST., STRONG AVE., PINE ST., PECK ST., HOUSTON AVE., HAN TON AVE., JEFFERSON ST., FIRST ST., THIRD ST., FIFTH ST., SIXTH ST., SEVENTH ST., EIGHTH ST., NINTH ST., TENTH ST., ELEVENTH ST., TWELFTH ST., THIRTEENTH ST., FOURTEENTH ST., FIFTEENTH ST., SIXTEENTH ST., SEVENTEENTH ST., EIGHTEENTH ST., NINETEENTH ST., TWENTIETH ST., TWENTY-FIRST ST., TWENTY-SECOND ST., TWENTY-THIRD ST., TWENTY-FOURTH ST., TWENTY-FIFTH ST., TWENTY-SIXTH ST., TWENTY-SEVENTH ST., TWENTY-EIGHTH ST., TWENTY-NINTH ST., THIRTIETH ST., THIRTY-FIRST ST., THIRTY-SECOND ST., THIRTY-THIRD ST., THIRTY-FOURTH ST., THIRTY-FIFTH ST., THIRTY-SIXTH ST., THIRTY-SEVENTH ST., THIRTY-EIGHTH ST., THIRTY-NINTH ST., FORTIETH ST., FORTY-FIRST ST., FORTY-SECOND ST., FORTY-THIRD ST., FORTY-FOURTH ST., FORTY-FIFTH ST., FORTY-SIXTH ST., FORTY-SEVENTH ST., FORTY-EIGHTH ST., FORTY-NINTH ST., FIFTIETH ST., FIFTY-FIRST ST., FIFTY-SECOND ST., FIFTY-THIRD ST., FIFTY-FOURTH ST., FIFTY-FIFTH ST., FIFTY-SIXTH ST., FIFTY-SEVENTH ST., FIFTY-EIGHTH ST., FIFTY-NINTH ST., SIXTIETH ST., SIXTY-FIRST ST., SIXTY-SECOND ST., SIXTY-THIRD ST., SIXTY-FOURTH ST., SIXTY-FIFTH ST., SIXTY-SIXTH ST., SIXTY-SEVENTH ST., SIXTY-EIGHTH ST., SIXTY-NINTH ST., SEVENTIETH ST., SEVENTY-FIRST ST., SEVENTY-SECOND ST., SEVENTY-THIRD ST., SEVENTY-FOURTH ST., SEVENTY-FIFTH ST., SEVENTY-SIXTH ST., SEVENTY-SEVENTH ST., SEVENTY-EIGHTH ST., SEVENTY-NINTH ST., EIGHTIETH ST., EIGHTY-FIRST ST., EIGHTY-SECOND ST., EIGHTY-THIRD ST., EIGHTY-FOURTH ST., EIGHTY-FIFTH ST., EIGHTY-SIXTH ST., EIGHTY-SEVENTH ST., EIGHTY-EIGHTH ST., EIGHTY-NINTH ST., NINETIETH ST., NINETY-FIRST ST., NINETY-SECOND ST., NINETY-THIRD ST., NINETY-FOURTH ST., NINETY-FIFTH ST., NINETY-SIXTH ST., NINETY-SEVENTH ST., NINETY-EIGHTH ST., NINETY-NINTH ST., ONE HUNDREDTH ST.
- Barricades:**
 - 2 EA BARRICADE TYPE III
 - 2 EA M4-10 LT
 - 2 EA RII-4
 - W21-4
 - W20-3
 - M4-9RT
 - M4-8A
 - W21-4
 - W20-2 SS-1
 - W20-3 SS-1
 - W21-4 SS-1
 - IEA BARRICADE TYPE III
 - 1 EA RII-4
 - IEA BARRICADE TYPE III
 - 1 EA RII-4
 - W20-3
 - W21-4
 - 2 EA RII-2
 - 12 EA PLASTIC DRUM, FLUORESCENT
 - 6 EA BARRICADE, TYPE III, LIGHTED
 - 3 EA RII-2
 - 12 EA PLASTIC DRUM, FLUORESCENT
 - 6 EA BARRICADE, TYPE III, LIGHTED
- Signs:**
 - SIGN, PORTABLE, CHANGEABLE MESSAGE
 - SIGN, PORTABLE, CHANGEABLE MESSAGE
- Drums:**
 - 12 EA PLASTIC DRUM, FLUORESCENT
 - 12 EA PLASTIC DRUM, FLUORESCENT
- Other Features:**
 - MAP
 - MAP

BARRICADE, TYPE III, HIGH INTENSITY, DOUBLE SIDED, LIGHTED, FURN	16	EA
BARRICADE, TYPE III, HIGH INTENSITY, DOUBLE SIDED, LIGHTED, OPER	16	EA
PLASTIC DRUM, FLUORESCENT, FURN	50	EA
PLASTIC DRUM, FLUORESCENT, OPER	50	EA
SIGN, TYPE B TEMP, PRISMATIC, FURN	267	SFT
SIGN, TYPE B TEMP, PRISMATIC, OPER	267	SFT
SIGN, TYPE B, TEMP, SPEC, FURN	12	SFT
SIGN, TYPE B, TEMP, SPEC, OPER	12	SFT
MINOR TRAFFIC DEVICES	1	LS
MAINTENANCE GRAVEL, LM	200	CYD
SIGN, PORTABLE, CHANGEABLE MESSAGE, FURN	2	EA
SIGN, PORTABLE, CHANGEABLE MESSAGE, OPER	2	EA
SIGN COVER	5	EA

[illegible]

SS-I

48"

APPLE AVE

12"

6"

SIGN	DESCRIPTION	QUANTITY	AREA	TOTAL AREA
SS-1	APPLE AVE	3	4	12 SFT
			TOTAL	12 SFT

CITY OF MUSKEGON		FIRST STREET	
OFFICE OF THE CITY ENGINEER		HAMILTON TO APPLE AVENUE (M-46)	
DRAWN C WIGGINS JULY 24	REVISION	SURVEY F PEASE	MAY 24
CHECKED	REVISION	AS-BUILT	H-92412
APPROVED		SCALE 1" = 20'	PROJECT NO SHEET NO 4 OF 4