

Addendum 01

PRE-BID MEETING AGENDA/MINUTES

Project: H-92412 First Street, Hamilton to Apple

Date: Wednesday, September 18, 2024

UTILITIES AFFECTED

1. DTE – GAS
 - a. DTE has no known work to perform.
2. Consumers Energy – Electric
 - a. No known work to perform.
3. Frontier – Telecommunications
 - a. No known work to perform.
4. Comcast – cable
 - a. No issues known
5. Water & Sewer – City
 - a. The City has no known work to perform on this project.

CONTRACT REQUIREMENTS

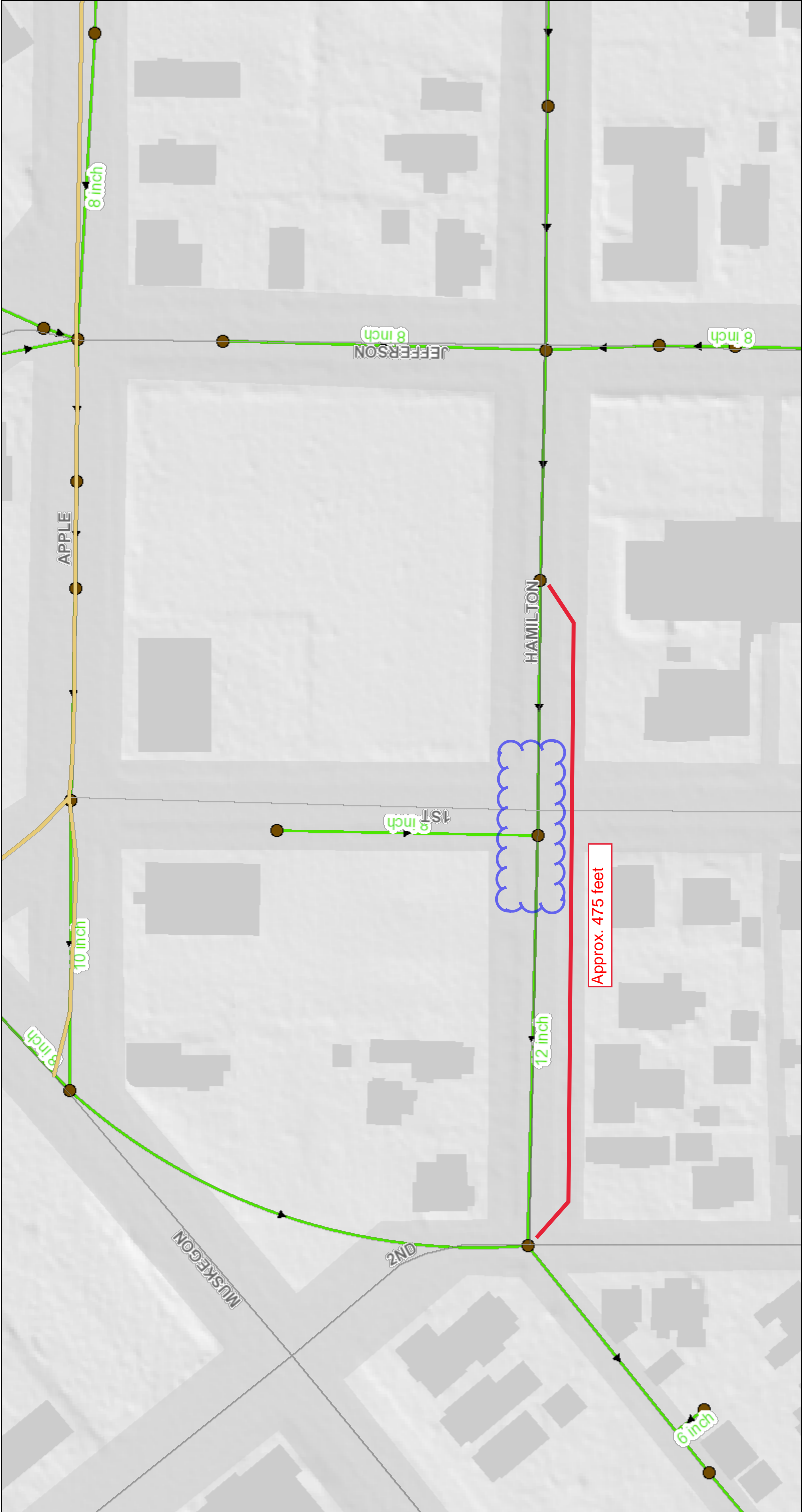
1. **All BIDS** must be submitted using the bid sheet contained in the Spec Book.
2. No late bids will be accepted.
3. **If you do not submit your bids by using the provided bid sheets; the city reserves the right to reject those bids.**
4. **This IS A NOT PREVAILING WAGE PROJECT.** See the wage decision in Addendum 1.
5. It is suggested that each bidder refer to the "Bidder's Checklist" to ensure that all required information is included with the bid.
6. **Bid Bonds-** 5% Bid Bonds must accompany your bid submittal, or 4 letters of Recommendation.
7. **City Income Tax Guidelines-** The successful bidder must adhere to the City Income Tax guideline, 1% for employees working and residing within the city limits and .5% for all others. The successful bidder must register with the Income Tax Department located on the first floor of city hall.
8. **Local Preference Policy-** If a local contractor's bid is within a range of 1% or less than the lowest submitted bid, the award preference may be given to the local contractor; within the city's corporate limits.

PROJECT OVERVIEW

1. **NO QUESTIONS** regarding this project will be entertained by the City after **4:00 pm** on **MONDAY, SEPTEMBER 23, 2024. All questions should be directed to Joel Brookens (phone: 231-724-6900; email: (Joel.Brookens@shorelinecity.com))**
2. Bid openings are now on THURSDAYS!

3. Pump bypass: Can more details be shared, distance and expected flow rates?
 - a. Distance of pumping is approx. 475 feet. See attached map.
 - b. Flow rates have not been measured. The 12 inch normally flows about 10% to 25% full. Expect 500 gpm.
4. Special Provisions for MACHINE GRADING, MOD and PAVT, REM, MOD; were inadvertently not modified for this project. The notes within the plan set are correct. Please delete these two SP's from the spec and add the following SP's.

First Street, pump bypass detail info



9/20/2024, 9:41:56 AM

- Street Centerline
- Streets
- Highways
- Force Main
- Sanitary Gravity Main
- Sanitary Manhole
- City Boundary

1:1,128



Muskegon County GIS, Muskegon County, Michigan, Esri, HERE, Garmin, GeoTechnologies, Inc., USGS, EPA

**CITY OF MUSKEGON
SPECIAL PROVISION
FOR
MACHINE GRADING, MODIFIED**

1 of 2

September, 2024

City of Muskegon

DESCRIPTION:

The work covered by this special provision shall be in accordance with Section 205 of the MDOT 2020 Standard Specifications for Construction, except where modified herein.

CONSTRUCTION METHODS:

There will be approximately 300 Cyd LM of excavation of which approximately 0 Cyd LM will be used for embankment. The redistribution of the excavated material for embankment will be included in the payment for Machine Grading, Modified. The remaining 300 Cyd LM of excavation will be removed from the job site and become property of the contractor. Removal of excess excavation will be included in the payment for the Machine Grading, Modified pay item.

The resulting sub base shall be shaped to within ½ inch of the proposed cross section as shown on the construction plans. The existing new base will be watered and compacted to 95% of the maximum unit weight.

Determination of the disposal site and disposal of a project total 300 Cyd LM of excess excavated material is the responsibility of the Contractor. Payment for hauling and disposal of excess material will be included in the Machine Grading, Modified pay item. Payment for grading and compacting for proposed sidewalks, driveways, terraces, sidewalk ramps, intersection returns and any other areas that need grading and compacting for new items of work will be included in the Machine Grading, Modified pay item.

The City can provide electronic Auto cad file for the use of automated machine guidance. These electronic files are not construction documents. Differences may exist between these electronic files and corresponding hard-copy construction documents. Engineer makes no representation regarding the accuracy or completeness of the electronic files. In the event that a conflict arises between the hard-copy drawings and the electronic files, the hard-copy drawings shall govern. Contractor is responsible for determining if any conflicts exist. No additional compensation will be paid for errors found within the electronic files.

MACHINE GRADING, MODIFIED

2 of 2

MEASUREMENT AND PAYMENT:

Measurement will be by length in stations measured once along the proposed road centerline. The completed work including all materials, labor and equipment will be measured and paid for at the contract unit price for the following:

Pay Item:

Pay Unit:

Machine Grading, Modified

Station

**CITY OF MUSKEGON
SPECIAL PROVISION
FOR
PAVT, REM, MODIFIED**

1 of 1

September 2024

City of Muskegon

DESCRIPTION

The work shall be in accordance with Section 204 of the MDOT 2020 Standard Specifications for Construction and as specified herein.

CONSTRUCTION

The work shall be in accordance with Section 204 of the MDOT 2020 Standard Specifications for Construction, except for the following:

Saw-cut edge as indicated on the plans or as directed by the Engineer and remove the full depth of pavement, regardless of thickness or the material.

Pavement cores and soil boring logs are shown on the construction plans. The Contractor is responsible for verification of this data before bidding on this project.

Existing pavement consist of approximately 3 inch to 7 inch of HMA. The Hamilton intersection appears to have 6 inch concrete base with a 3 inch to 4 inch overlay of HMA.

MEASUREMENT AND PAYMENT

Pavt, Rem, Modified will be measured and paid for once regardless of the existing material type, number of layers or thickness of individual layers. Payment for the removal of curb or curb and gutter that is adjacent to the pavement being removed, will be classified as Pavt, Rem, Modified. No separate pay item for curb and gutter removal will be allowed when the curb or curb and gutter being removed is adjacent to and abutting pavement being removed. The completed work including all materials, labor and equipment will be measured and paid for at the contract unit price for the following contract item (pay item):

PAY ITEM

Pavt, Rem, Modified

PAY UNIT

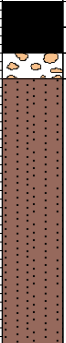
Square Yard



Project Name: First Street from Hamilton Avenue to Apple Avenue **Project Number:** 2024.1380 TS
Project Location: Muskegon, Michigan **Logged By:** D.Niemczak **Reviewed By:** G.Groves
Client: City of Muskegon **Survey Datum:** NAD 1983 StatePlane Michigan South **Hole Depth:** 4.00
Date Started: Jul 16 2024 **Completed:** Jul 16 2024 **Latitude:** **Longitude:** **Elevation:**
Drilling Method: Hand Auger **Frost Depth**
Notes: **Ground Water Levels**



End of Drilling Jul 16 2024 - Water not encountered.

Depth	Graphic	Material Description	Moisture Content	Hand Penetrometer	Blow Counts	DCP										USCS
						5	10	15	20	25	30	35	40	45		
1		ASPHALT - (2.5") ASPHALT - thin layer with chip / seal (1.25") ASPHALT - (3.25") CONCRETE - crushed (4.0") SAND - light brown fine														
2																
3																
4																
5																
6																
7																
8																
9																
10																
11																
12																
13																
14																
15																

Ann Arbor

•

Muskegon

•

Traverse City

•

Upper Peninsula

(800)-933-3959



Project Name:First Street from Hamilton Avenue to Apple Avenue

Project Location:Muskegon, Michigan

Client:City of Muskegon

Date Started:Jul 10 2024

Drilling Method:Hand Auger

Notes:

Project Number:2024.1380 TS

Logged By:A.Lawton

Survey Datum:NAD 1983 StatePlane Michigan South

Latitude:

Longitude:

Frost Depth

Reviewed By:G.Groves

Hole Depth:12.80

Elevation:

Completed:Jul 10 2024

Ground Water Levels

End of Drilling

Jul 10 2024 - Water not encountered.

Depth	Graphic	Material Description	Moisture Content	Hand Penetrometer	Blow Counts	DCP										USCS	
						5	10	15	20	25	30	35	40	45			
		ASPHALT - (3.0")															
		GRAVEL - natural															
1		SAND - light brown fine to medium															
2																	
3																	
4																	
5																	
6																	
7																	
8																	
9																	
10																	
11																	
12																	
13																	
14																	
15																	